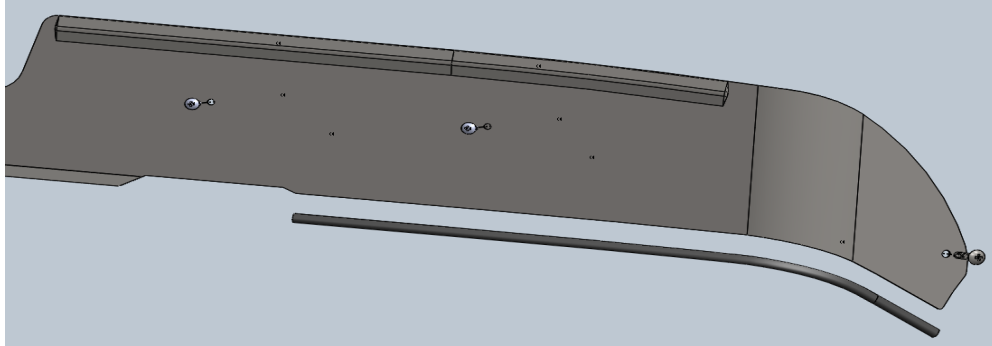


## BUG DEFLECTOR 2024+ Mack Granite

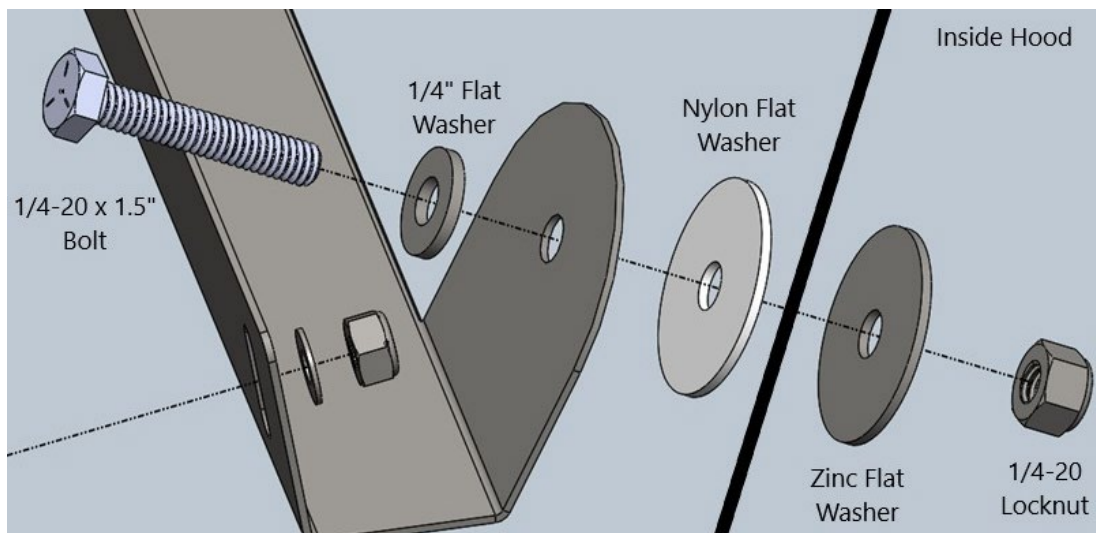
### INSTALLATION INSTRUCTIONS:

1. Remove the plastic film from around all bolt holes as well as mounting brackets.
2. Install the rubber edge trim to the bottom edge of the bug deflector on both sides as shown below in Figure 1.



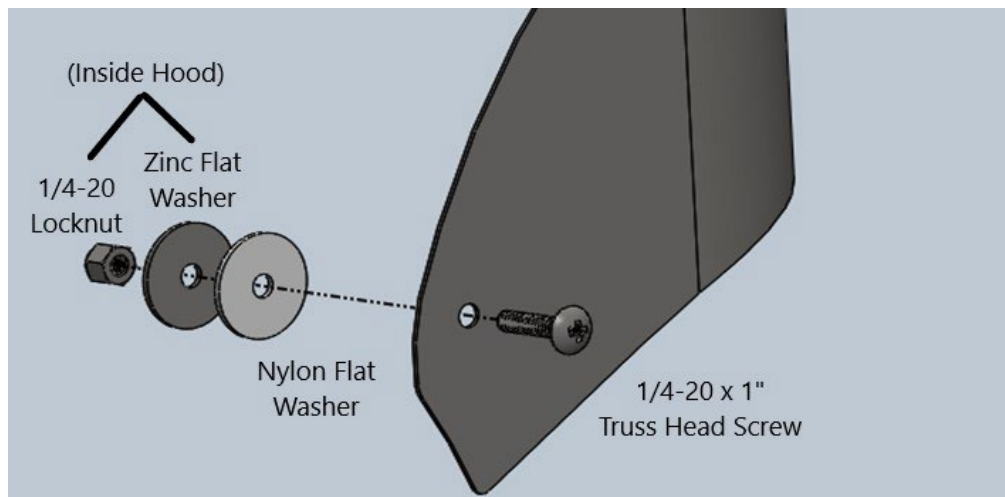
**Figure 1: Installation of Rubber Edge Trim (Driver Side Shown)**

3. Use the supplied 10-32 hardware to attach both brackets with slots to the back side of the bug deflector. Do not fully tighten, leaving the brackets loose enough to allow for slight adjustments.
4. Position the bug deflector so it is centered on the hood and sitting just behind the grille surround. Ensure that the ends will align with the grille surround as well.
5. Adjust the mounting brackets as needed so they sit against the hood.
6. Mark the mounting bracket hole locations (x4) onto hood surface. Set the bug deflector aside.
7. Drill 9/32" holes in the locations marked during Step 6. It's advised to use a smaller drill bit for a pilot hole.
8. Use the supplied 1/4" hardware as shown below in Figure 2 to install the bug deflector onto the hood.



**Figure 2: Hardware for Mounting Bug Deflector to Hood**

9. Apply pressure at the center of the bug deflector to ensure it is sitting against the hood and is resting just behind the grille surround. Install the supplied #10 x 1/2" screw through the hole centered on the bottom flange of the bug deflector. Be careful not to overtighten this screw.
10. Tighten the fasteners securing the bug deflector to the mounting brackets, ensuring that the bug deflector remains in the correct position on the hood.
11. Move and adjust the ends of the bug deflector as needed so that the front edge of the bug deflector follows and rests just behind the edge of the grille surround. Once properly positioned, mark / drill a 9/32" hole.
12. Install the supplied 1/4" hardware as shown below in Figure 3 to fasten the ends of the bug deflector to the hood.



**Figure 3: Hardware for Fastening Ends of Bug Deflector (Passenger Side Shown)**

13. Remove the remaining plastic film from the bug deflector and clean with glass cleaner and a soft cloth as needed.