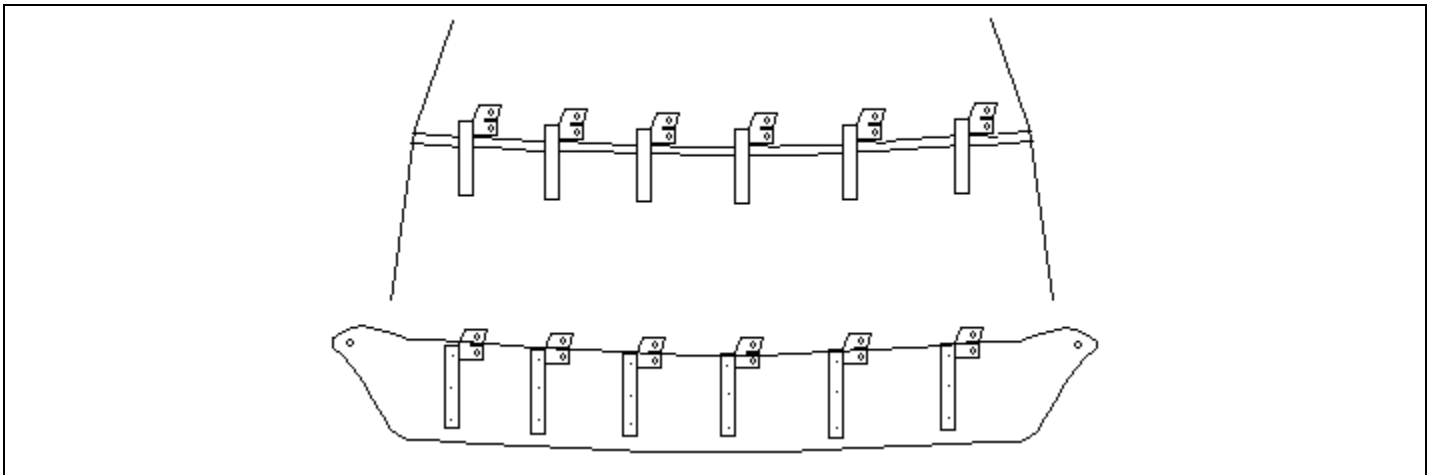


STAINLESS STEEL ACCESSORIES

i SERIES SUNVISOR

INSTALLATION INSTRUCTIONS

1. Fasten 6 brackets to sunvisor using 10-32 x 1/2" hardware. Do not tighten brackets completely, allow brackets to move for adjustment.
2. **Tape corners of cab to prevent scratching.**
3. Using two people, hold sunvisor on cab with the brackets touching rubber windshield grommet.
4. Center sunvisor and mark edges of brackets on roof.
5. Remove brackets from sunvisor.
6. Hold brackets to roof and mark holes.
7. Drill 9/32" holes into roof.
8. Pop out storage pockets in upper console to gain access to inside of roof.
9. Hold backing plates inside roof and align with holes.
10. Use silicone caulking to seal underside of brackets and fasten to roof with 1/4" x 1" bolts.
11. Place sunvisor over installed brackets and semi fasten with 10-32 x 1/2" screws.
12. Front edge of sunvisor should be 1/2" ahead of outer brackets.
13. While holding ends of sunvisor to side of cab drill 1/8" hole through sunvisor into cab.
14. **Be sure to seal all holes into roof and cab with silicone.**
15. Attach ends using supplied #10 x 1/2TS" tapping screws.
16. Tighten all hardware.
17. Remove protective plastic coating.



STAINLESS STEEL ACCESSORIES

Hardware List:

18 – 10-32 x 1/2" Phillips Truss bolts	2 - #10 x1/2TS – stainless tapping screws
18 – 10-32 Locknuts	6 – Outer brackets
18 – 3/16" Flat washers	6 – Inner backing plates
12 – 1/4" x 1" Hex head bolts	1 – Tube silicone
12 – 1/4" Flat washers	
12 – 1/4" Lock washers	